



Staveley Gardens, London, W4 2SF

Guide Price £599,950

**WHITMAN & CO.**

SALES · LETTINGS · COMMERCIAL

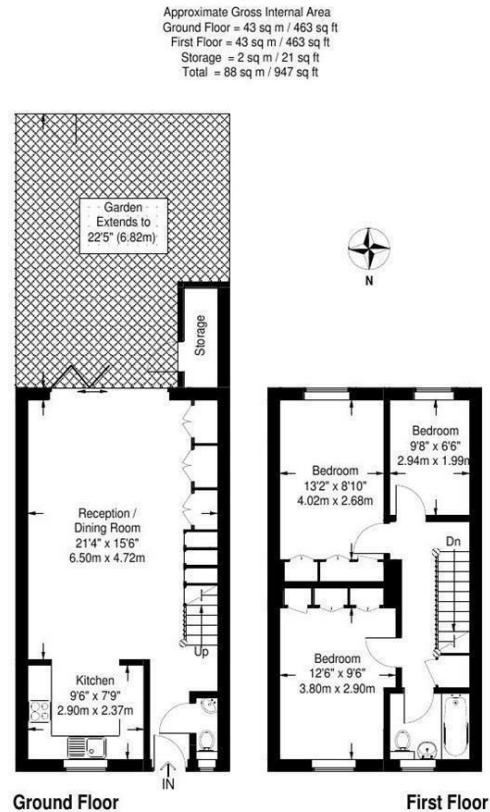
- Great Grove park Location near Dukes meadows
- Very nicely presented family house
- Fitted modern kitchen
- Good for transport links
- Open plan living area with bifold doors
- No onward chain

Tenure - Freehold  
Local Authority - Hounslow  
Council Tax - Band E

## THE PROPERTY

An immaculately presented three-bedroom house offering an excellent balance of living and entertaining space in this quiet cul de sac close to The River and the open fields of Dukes Meadows. The accommodation comprises three bedrooms, family bathroom, loft storage, a 29' open plan reception room with bi-fold doors onto the private landscaped garden, fully integrated kitchen, Cloakroom, Extensive built-in storage, integrated office unit, and off-street parking. Situated within close proximity of Chiswick (mainline) Station, numerous bus routes, and The Riverside Club. No onward chain.

### Staveley Gardens, Chiswick W4 2SF



Measured in accordance with RICS guidelines. To be used for identification and guidance purposes only. Not to scale.  
© Photos Plans and EPCs | Tel: 07774 688 771 | info@photosplansandepcs.com | www.photosplansandepcs.com (ID 61836)

## SITUATION



5-7 Turnham Green Terrace, Chiswick, London, W4 1RG

Tel 020 8747 8800

E-mail sales@whitmanandco.com

Website www.whitmanandco.com

